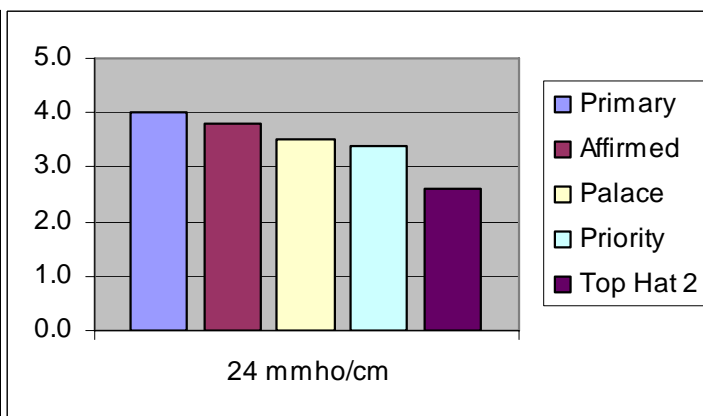
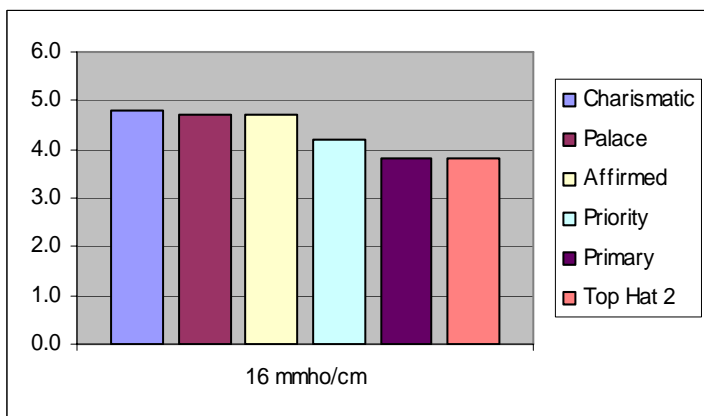


# CLUBHOUSE® CPQ® + ST®

## Product Sheet



*Salinity Tolerance of Perennial Ryegrass\*Study done by Colorado State University\*Effect of salinity levels on average quality Scale 0-9, with 9=best April-July 2007*

Salt problems are of great concern in the arid and semi-arid regions where salt content of soils are naturally high and precipitation is not enough to leach out the soluble salts. Problems associated with saline soils and saline irrigation water may increase in the future as more marginal quality waters are applied to turf sites. One of the most efficient ways to improve the health of the turfgrass in salinity stress situations is to select and use salinity tolerant

**CLUBHOUSE® CPQ® + ST®**, could be comprised of 3 of the following 4 varieties; **Primary, Palace, Priority or Affirmed** which are all guaranteed to be Poa Annuua free on a 50 gram test. In addition to Salt Tolerance, these highly rated varieties feature superior turf quality, dark color and excellent density . **CLUBHOUSE® CPQ® + ST®**... setting the new standard for quality, performance and Salt Tolerance (ST®).

### Trial Summary:

- Greenhouse hydroponic study-individual entries planted into shallow pots containing approximately 1" isolite over small rocks.
- Pots suspended over tanks with 4 different levels of nutrient solution, measured in mmho/cm. Control was at ~2.0 with ocean salt adding to increase levels to 8.0, 16.0 & 24.0
- Ocean water is around approximately 54.6 mmho/cm.
- 16 mmho/cm is approximately 10,240 ppm.
- 24 mmho/cm is approximately 15,360 ppm.



**Seeding the Future Together!**

Columbia Seeds LLC  
 887 NW Grant Avenue  
 Corvallis, Oregon 97330  
 Toll Free: 888.681.7333  
 Phone: 541.757.1468  
 Fax: 541.757.1479  
[www.columbiaseeds.com](http://www.columbiaseeds.com)