

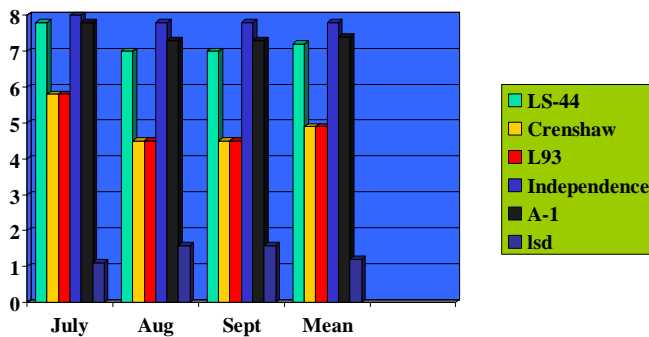


LS-44

CREEPING BENTGRASS

Technical Data Sheet

From the developer of today's leading bentgrass variety, Dr. Virginia Lehman releases the newest generation of creeping bentgrass called LS-44.

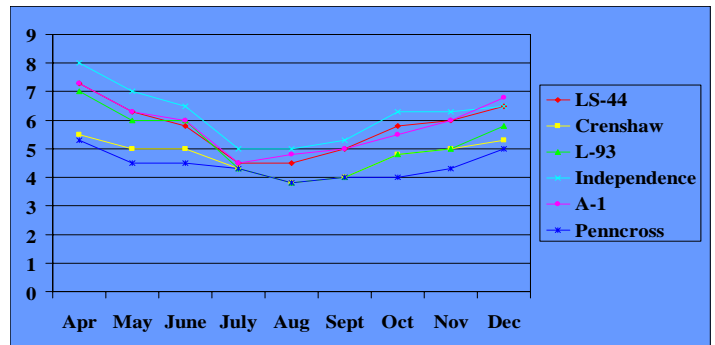


2002 TURF DENSITY, NC State, Pinehurst, NC

History:

LS-44 was developed over a number of years using both field testing and actual golf course trials. A large number of diverse clones were selected to create a progeny that exhibited improved dollar spot, texture, density and heat resistance. Careful selections were based on maintaining high density while minimizing lateral growth common to other top rate varieties. Extreme lateral growth requires superintendents to maintain the green at higher levels to properly manage thatch problems. LS-44's high density rating and slower

lateral growth provides a true putting surface under various mowing heights without thatch build-up. These qualities make it an excellent choice for seeding on new or existing greens, tees and fairways.



2002 Quality, NC State, Pinehurst, NC

Low cut (115/1000)/with Fungicide

Testing:

Evaluations have been observed at NC State at Pinehurst, North Carolina under various cutting heights and under both applied fungicide and natural sites. These evaluations have shown very positive results under all applications. Additional information will be gathered from the recently planted National Turfgrass Evaluation Program.



Seeding the Future Together

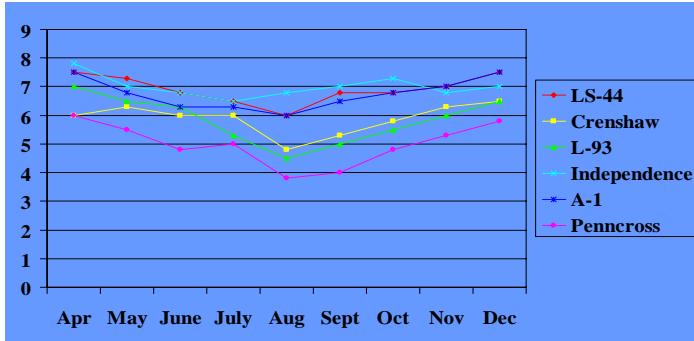
887 NW Grant Avenue
 Corvallis, OR 97330
 Toll Free: 888.681.7333
 Fax: 541.757.1479
www.columbiaseeds.com



LS-44

CREEPING BENTGRASS

Technical Data Sheet



- Winter Kill: Good
- Dollar Spot Resistance: Excellent
- Brown Patch Resistance: Excellent
- Thatch: Excellent
- Wear Tolerance: Good
- Root Depth: Good
- Tiller Counts: High
- Poa Annuua Percentage: Low

2002 Quality, NC State, Pinehurst, NC

Characteristics:

- Turfgrass Quality Greens: Excellent
- Turfgrass Quality Fairways: Excellent
- Color: Good
- Leaf Texture: Excellent
- Spring Density: Excellent
- Summer Density: Excellent
- Fall Density: Excellent
- Spring Green-Up: Good
- Seedling Vigor: Good
- Establishment:: Good
- Living Ground Cover Summer: Excellent
- Living Ground Cover Fall: Excellent
- Drought Tolerance: Excellent
- Frost Tolerance: Good



Seeding the Future Together

887 NW Grant Avenue
 Corvallis, OR 97330
 Toll Free: 888.681.7333
 Fax: 541.757.1479
www.columbiaseeds.com